

What's New in Puppet Enterprise 2016.1

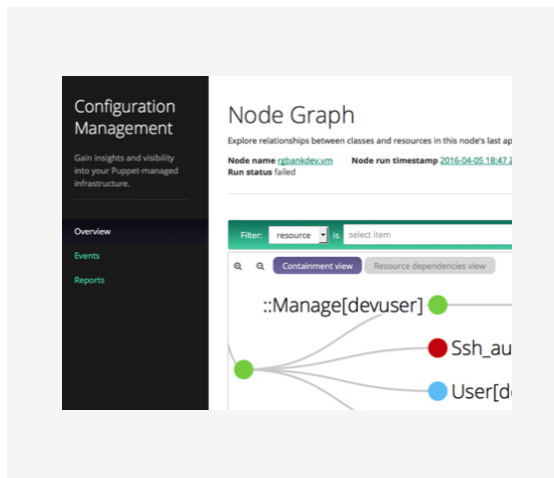
Orchestrate deployments & drive change with confidence

Directing change exactly when and how you want it across complex infrastructure and distributed apps hasn't always been easy. The new Puppet Enterprise 2016.1 makes it possible to drive change with confidence and easily orchestrate deployments across your infrastructure and applications.

Direct ordered deployments of infrastructure & applications

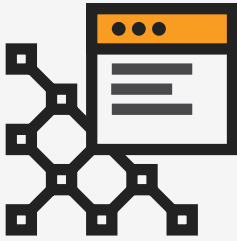
Orchestrate deployment of changes across your entire infrastructure based on dependencies you define. With the Puppet orchestrator, you now get:

- **Full & direct control** - Run phased deployments and orchestrate changes to infrastructure and applications on demand, with the push of a button.
- **Real-time feedback and visibility** - Gain insight into changes as they happen, view resource events in real-time, and throttle the rate of change as needed
- **Built-in intelligence and automation** - Orchestrate ordered deployments based on dependencies you define.



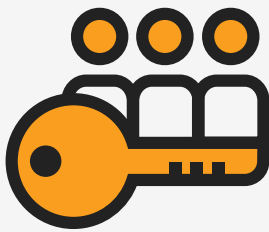
Gain insight & confidence by visualizing dependencies

Using a new interactive visualization within the Puppet Enterprise web UI, easily view all dependencies across the configurations you define and enforce on nodes. This makes it easier than ever to troubleshoot issues, optimize your infrastructure code, understand the impact of changes so you can deploy more confidently, and collaborate by sharing your configurations with other teams.



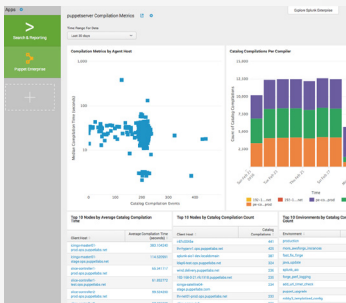
Deploy confidently with code management

An intuitive new command line interface for Code Management makes it easier than ever to know exactly when your Puppet code deployments are complete, inspect and debug faster without needing to check logs, and avoid unexpected changes by simulating the outcome of a code deployment before you trigger it.



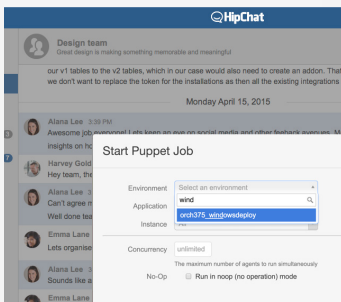
Easily grant & revoke access to Puppet Enterprise

New additions to role-based access control and token authentication let you grant and revoke access to Puppet Enterprise capabilities for each individual on your team. Improve auditing and security by knowing exactly who changed what and when.



Integrate performance metrics with Splunk

Send data from Puppet Enterprise to Splunk to analyze the health of your Puppet infrastructure. You can do things like view catalog compilation times per node to assess performance, identify capacity issues and audit PuppetDB queries.



Improve collaboration with Atlassian Hip Chat

Improve collaboration, transparency and feedback loops by initiating infrastructure deployments, seeing those changes as they occur, and discussing them with your teams, all directly through HipChat.