

RED HAT ENTERPRISE LINUX FOR REAL TIME

Consistent response times from a stable, mature platform

DATASHEET

For the most time-critical workloads, “close enough” isn’t good enough.

For instance, in the highly competitive financial services marketplace, milliseconds can make the difference between a trade and a lost customer. In these environments, consistent response times are a huge competitive advantage.

Red Hat Enterprise Linux for Real Time meets the needs of time-sensitive workloads by providing predictably consistent response times.

Red Hat® Enterprise Linux® for Real Time is a real-time computing platform for deadline-oriented applications and time-sensitive workloads. Based on a specialized version of the stock Red Hat Enterprise Linux 7 kernel, Red Hat Enterprise Linux for Real Time builds on the reliability, scalability, and performance of the world’s leading enterprise Linux platform, ensuring the highest levels of predictability for consistent, low-latency response times.

FEATURES AND BENEFITS

FEATURE	BENEFIT
Highly deterministic performance	Through scheduling and performance gains, as well as increased preemption opportunities, Red Hat Enterprise Linux for Real Time minimizes the potential for any deviations in application performance.
High-resolution timers	Nanosecond timer resolution allows systems to process data with greater accuracy.
Full application compatibility with standard Red Hat Enterprise Linux	The Red Hat Enterprise Linux for Real Time user space is derived from that of Red Hat Enterprise Linux 7, so applications certified to run on Red Hat Enterprise Linux 7 can run unmodified on Red Hat Enterprise Linux for Real Time.
Integrated tuning tools	Red Hat Enterprise Linux for Real Time uses the same system tuning tools available in Red Hat Enterprise Linux 7. It also includes additional tools to tune real-time characteristics. As each real-time computing application is different, Red Hat Enterprise Linux for Real Time allows for easy, on-premise adjustments of priorities, interrupts, and more.
The confidence of running Red Hat Enterprise Linux 7	Red Hat Enterprise Linux for Real Time inherits the stability and maturity of Red Hat Enterprise Linux and builds on the same platform for hardware certifications, giving you a variety of choices for certified hardware partners.

TECHNICAL SPECIFICATIONS

Red Hat Enterprise Linux for Real Time runs on x86_64 server platforms that are certified to run Red Hat Enterprise Linux.

HARDWARE ARCHITECTURE	x86_64
Deployment environment	Physical



facebook.com/redhatinc
@redhatnews
linkedin.com/company/red-hat

Additional information on Red Hat Enterprise Linux life cycle: <https://access.redhat.com/support/policy/updates/errata>

Additional information on production support service level agreements: <https://access.redhat.com/support/offerings/production/sla>

KERNEL

Kernel version	3.10
Possible kernel rebase during life cycle	No
Kernel application binary interface (kABI) guarantee	No

APPLICATION SOFTWARE

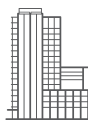
Userspace software and utilities	Built from a common source for all Red Hat Enterprise Linux variants
Application binary compatibility (ABI) for a given architecture	Yes
Application programming interface (API) compatibility during life cycle	Yes
Application binary interface (ABI) compatibility during life cycle	Yes
Ecosystem of innovation	Yes

SERVICE LEVEL AGREEMENTS

Product life cycle	5 years
Production support service level agreement	Premium
Asynchronous bug fixes (RHBAs)	Urgent and high
Asynchronous security fixes (RHSAs)	Critical and important

ADD-ONS

Smart Management Add-On	Available
Extended Update Support Add-On (EUS)	Not available



ABOUT RED HAT

Red Hat is the world's leading provider of open source solutions, using a community-powered approach to provide reliable and high-performing cloud, virtualization, storage, Linux, and middleware technologies. Red Hat also offers award-winning support, training, and consulting services. Red Hat is an S&P company with more than 80 offices spanning the globe, empowering its customers' businesses.



facebook.com/redhatinc
@redhatnews
linkedin.com/company/red-hat

NORTH AMERICA
1 888 REDHAT1

**EUROPE, MIDDLE EAST,
AND AFRICA**
00800 7334 2835
europe@redhat.com

ASIA PACIFIC
+65 6490 4200
apac@redhat.com

LATIN AMERICA
+54 11 4329 7300
info-latam@redhat.com