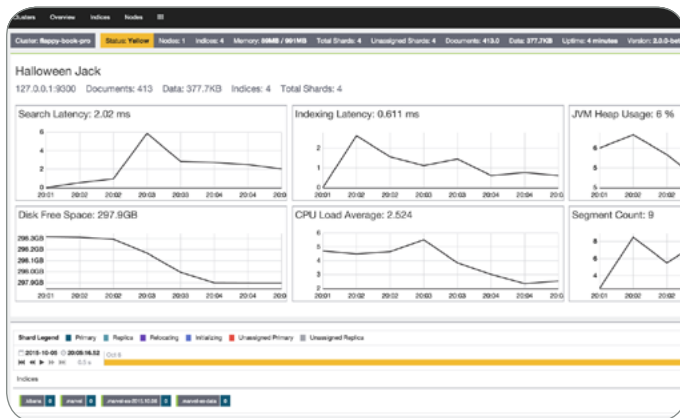


### Get real-time visibility into your Elasticsearch deployment.

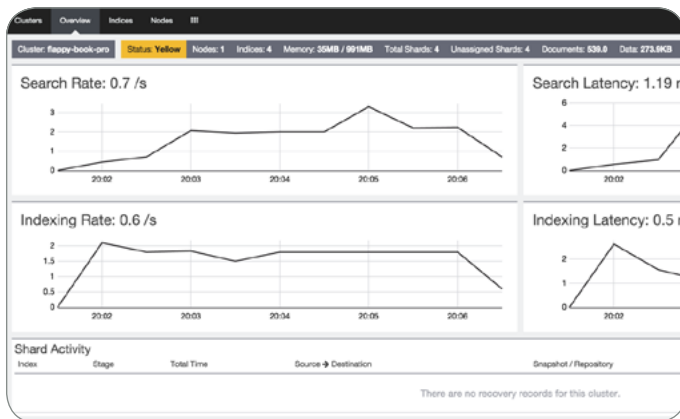
Marvel is a comprehensive tool that provides complete transparency into the status of your Elasticsearch deployment. Created by the same engineers that built Elasticsearch itself, Marvel builds on the accumulated knowledge and experience of Elastic engineers, helping you monitor activity across your Elasticsearch cluster.

### Marvel helps diagnose issues quickly, and discover ways to fine-tune and optimize performance with:



#### Granular Monitoring

- Mine, collect, and visualize all metrics produced by each node in your Elasticsearch cluster
- See the current state of the cluster in real time as well as access to historical metrics
- Get direct visibility into the OS, JVM, and other processes running within Elasticsearch and Apache Lucene
- Monitor low-level system metrics, including machine load and CPU, disk, network, and memory usage

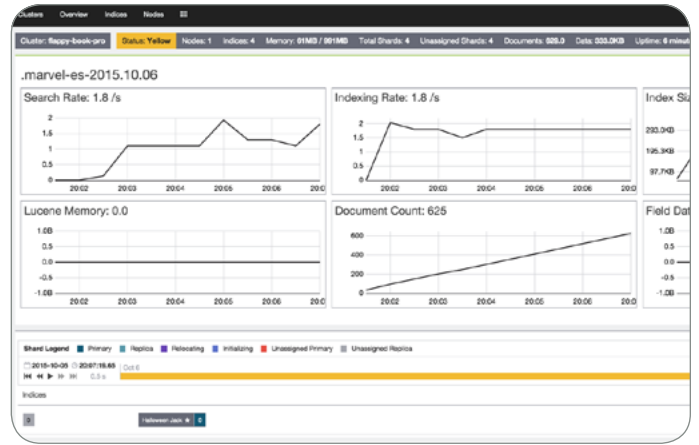


#### Comprehensive Dashboards and Root Cause Analysis

- Resolve any Elasticsearch performance issues in real time with valuable, actionable metrics on a real-time dashboard
- Monitor your Elasticsearch cluster on an index-by-index basis and per-node basis
- Pinpoint the root cause of reduced query performance quickly
- Visualize significant events overlaid with related metrics for any time period with annotations

## Rapid Discovery and Troubleshooting

- Discover how many searches your cluster is serving and how many documents you're indexing, simultaneously
- Understand why a particular node has high CPU usage due to expensive search operations or other factors quickly
- Identify what part of your index is using most of your available JVM heap memory, such as the field data cache
- Determine why documents are not showing up for indexing as fast as you'd like due to slower refresh rates on an index



## Take Control with Multicluster Support

- Marvel simplifies your workflow by allowing one centralized monitoring cluster to record and track the health and performance of multiple production Elasticsearch clusters.

The screenshot shows a table titled 'Your Clusters' with a 'Filter Clusters' input and '1 of 1' clusters displayed. The table has columns for Name, Nodes, and Indexes.

Name	Nodes	Indexes
elastic-web-prod	3	
elastic-web-staging	3	
elastic-web-dev	1	
elastic-qa-int	12	1

Anticipate issues, scale faster, and stay in control with Marvel.

**Marvel 2.0+ is compatible with:** Elasticsearch 2.0+, Kibana 4.2+, Shield 2.0+, Watcher 2.0+

**Marvel 1.3 is compatible with:** Elasticsearch 1.0.0 - 1.7.x, Shield 1.0 - 1.3.x

Elastic provides commercial products and enterprise-grade support for your projects in development and production.

marvel download  
[elastic.co/products/marvel](https://elastic.co/products/marvel)  
contact  
[sales@elastic.co](mailto:sales@elastic.co)